

VOGUE

JAPAN

September
2017
No. 217
¥700

ヴォーグ ジャパン

保存版! 別冊付録

2017 A/W
Bag & Shoes
カラー別
完全図鑑

仕事でも、遊びでも、
私を上げる
パワーアイテム。

この秋、色に
フォースが宿る。

Over 70の成熟レディ
が美しい理由と信念。

ハワード・ドレッシング
最新Do's & Don'ts
超くあの人に聞く
私的パワースポット。
Tokyoエネルギー
チャージガイド。
女性の力を分かち合う。
ニコール・キッドマン
ナタリー・ウォルフォヴァ

2017秋冬Best Buy

PART 1 ファッショニスタが狙う最新アイテム。
PART 2 モードな大人のタイムレス服。

POWER DRESSING

服のパワーは、私の証し。



VOGUE

AUG

21

new
beauty
ideas

Style
tricks to
try now

FEELGOOD
SUMMER BUYS

**DITCH THE
SNEAKERS**

Accessories
smarten up

FALLING
IN LOVE
WITH YOUR
PERSONAL
TRAINER

**OCEAN
DRIVE**

The life of
surfing's
golden girl

**ARTIFICIAL
INTELLIGENCE**

My smart-
drug diary

FIRST LOOK NEW SEASON

GLAMOUR

DENIM

EVERY
DAY

YOUR SIZE
AND STYLE
ARE IN HERE

CARA

DELEIVING NE

DON'T
KILL HER VIBE

MORE
CARA
THIS
WAY →

YOU'VE GOT
ONE LIFE
LIVE
IT

HOW TO... QUIT YOUR JOB
AND MOVE TO BALI
SHUT DOWN THE
BODY SHAMERS
REWRITE YOUR
LOVE STORY

BEAUTY
WE FOUND
YOUR NEXT
HAIRCUT

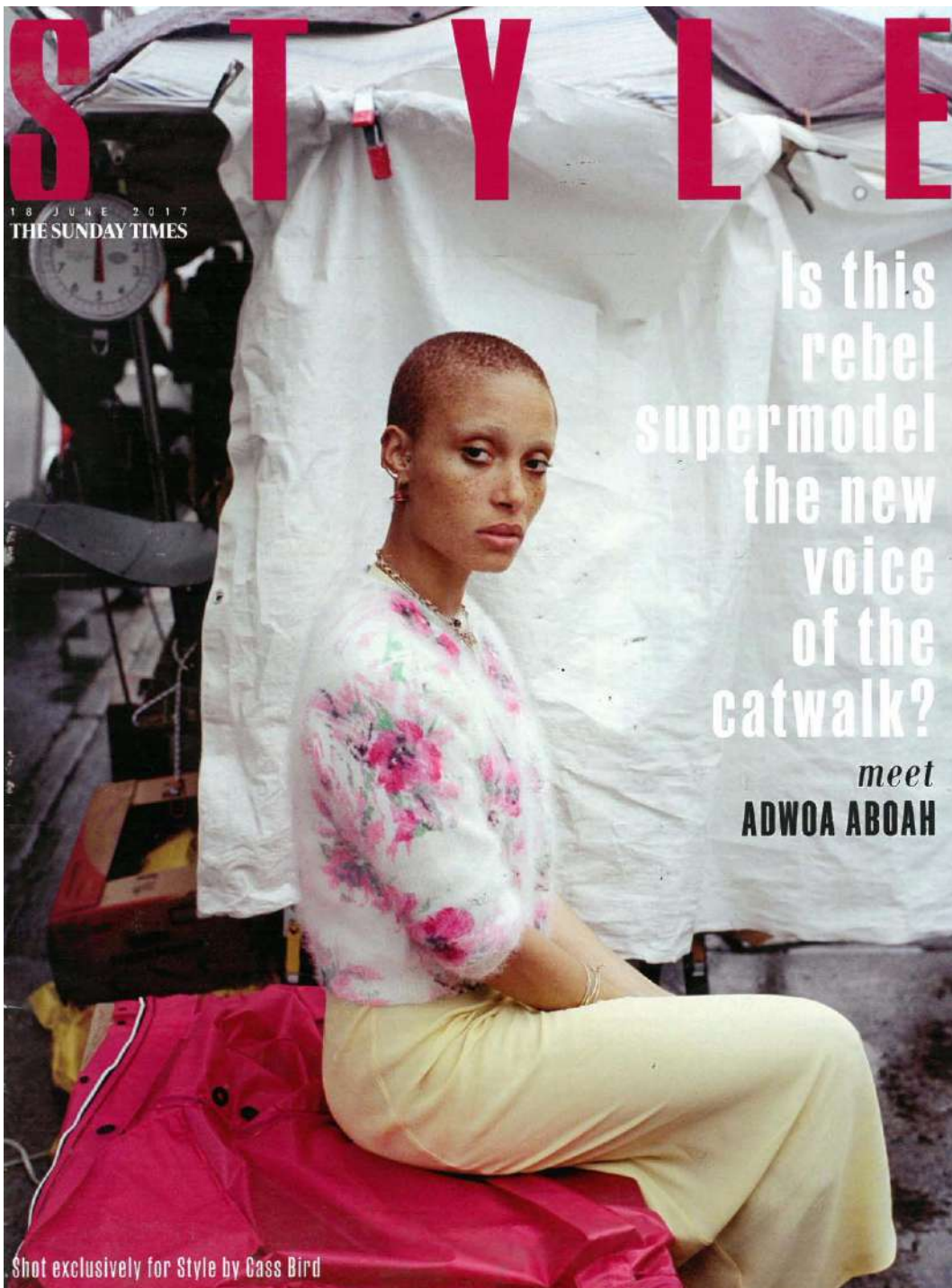
REAL TALK
ABOUT
PERIOD SEX



AUGUST 2017







marie claire

WWW.MARIECLAIRE.IT

ITALIA
AGOSTO 2017

30TH
ANNIVERSARY

MODA
WE LOVE

**IL MEGLIO
DELLE PRE-
COLLEZIONI**

**NUOVE
FRONTIERE**

**#CANADIANS
DO IT
BETTER**

FIDANZAMENTO 4.0

**LA PROMESSA
D'AVANTI AI FOLLOWERS**

VIAGGI

**ECOSOSTENIBILI,
SOCIALI,
AD ALTO
VALORE
AGGIUNTO**

Take it
EASY!

Harper's BAZAAR

ESPAÑA

BOLSOS Y
ZAPATOS
EFECTO
wow!

ESPECIAL
COLECCIONES
**¡QUE
EMPIECE
LA TEMPORADA!**

En portada
**DAPHNE
GROENEVELD**
de Prada y Bulgari

+

BELLEZA
EL MASAJE
QUE ADELGAZA

Palabra de
moda
LO NUEVO Y LO QUE VIENE

Nº 84 Agosto 2017 2,80 €
(Canarias 2,95 €)
Venta conjunta con
Nuevo Estilo

财富品质

FORTUNE CHARACTER

June, 2017 / Vol. 98

FORTUNE CHARACTER

引领由富及贵的格调 彰显富而好礼的涵养

June 2017



PRADA

Cahier 新款手袋



人民币100 HK\$120

CHINA-FORTUNE CHARACTER-PRADA-06.17



08 Brand :
PRADA
 - Material :
 velvet
 - Size :
 H200xW260xD100
 - Price :
 36,5000yen

NEW BAG for NEXT SEASON [New 12.08 > 12]

トラッドスタイルの上品な外しに
 アーティスティックなバッグを

(プラダ)のプレフォールコレクションから
 ビックアップしたのは、アーティスティックな
 ロック・ワトソンが描いた女性の顔をベ
 ルベットにプリントしたアーティスティックな
 バッグ。トラッドスタイルのスタイリングに、上
 品な外しを加えられる。バッグ ¥36,5000、ス
 カート ¥27,2000、シューズ ¥168,000 ¥
 すべて税込価格 / 以上すべてPRADA(プ
 ラダ ジャパン)で販売されています

CLUEL 090

JAPAN_CLUEL_PRADA_12.07.2017

RAD CRAFT

ざっくりと編まれたニットや
素朴な刺繍など、温もりを
感じさせる手仕事をちりばめた
スタイルを提案したブラダ。

バイソンとスエードを
組み合わせた、いかにも
ボヘミアンなバッグに対して、
大げさなボタンモチーフの
ポイントドゥパンプスが
ユニークなコントラストを醸す。

バッグ(H18.5×W28.5×
D14cm)¥409,000、

ファーハンドル¥80,000、

パンプス(H11cm)¥144,000、

コート¥1,822,000、

カーディガン¥129,000、

スカート¥205,000(参考色、

すべて予定価格)、マフラー

参考商品 Prada

チェア¥140,000

Demodemix

Photos: MASAMI NARUO at SEPT
Styling: YOKO KAGEYAMA at EIGHT PEACE
Hair: KENICHI for SENSE OF HUMOUR at EIGHT PEACE
Makeup: SADA ITO for NARS COSMETICS at DONNA
Models: JEBEDIAH, ANASTASIA V. at STAGE MODELS
Prop: PROPS NOW
Text: KAYORI MORITA



JAPAN_HARPER'S BAZAAR_PRADA_20.07.2017



それがたとえひとりの時であつても、女はいつだって
自分だけの、真実を演じてゐる。忘れたい感覚を束ねた
最新ルックに身を包み、いまだ上シアンターの幕が閉く。

Prada: 1980s-1990s, 1990s-2000s, 2000s-2010s, 2010s-2020s, 2020s-2030s, 2030s-2040s, 2040s-2050s, 2050s-2060s, 2060s-2070s, 2070s-2080s, 2080s-2090s, 2090s-2100s, 2100s-2110s, 2110s-2120s, 2120s-2130s, 2130s-2140s, 2140s-2150s, 2150s-2160s, 2160s-2170s, 2170s-2180s, 2180s-2190s, 2190s-2200s, 2200s-2210s, 2210s-2220s, 2220s-2230s, 2230s-2240s, 2240s-2250s, 2250s-2260s, 2260s-2270s, 2270s-2280s, 2280s-2290s, 2290s-2300s, 2300s-2310s, 2310s-2320s, 2320s-2330s, 2330s-2340s, 2340s-2350s, 2350s-2360s, 2360s-2370s, 2370s-2380s, 2380s-2390s, 2390s-2400s, 2400s-2410s, 2410s-2420s, 2420s-2430s, 2430s-2440s, 2440s-2450s, 2450s-2460s, 2460s-2470s, 2470s-2480s, 2480s-2490s, 2490s-2500s, 2500s-2510s, 2510s-2520s, 2520s-2530s, 2530s-2540s, 2540s-2550s, 2550s-2560s, 2560s-2570s, 2570s-2580s, 2580s-2590s, 2590s-2600s, 2600s-2610s, 2610s-2620s, 2620s-2630s, 2630s-2640s, 2640s-2650s, 2650s-2660s, 2660s-2670s, 2670s-2680s, 2680s-2690s, 2690s-2700s, 2700s-2710s, 2710s-2720s, 2720s-2730s, 2730s-2740s, 2740s-2750s, 2750s-2760s, 2760s-2770s, 2770s-2780s, 2780s-2790s, 2790s-2800s, 2800s-2810s, 2810s-2820s, 2820s-2830s, 2830s-2840s, 2840s-2850s, 2850s-2860s, 2860s-2870s, 2870s-2880s, 2880s-2890s, 2890s-2900s, 2900s-2910s, 2910s-2920s, 2920s-2930s, 2930s-2940s, 2940s-2950s, 2950s-2960s, 2960s-2970s, 2970s-2980s, 2980s-2990s, 2990s-3000s, 3000s-3010s, 3010s-3020s, 3020s-3030s, 3030s-3040s, 3040s-3050s, 3050s-3060s, 3060s-3070s, 3070s-3080s, 3080s-3090s, 3090s-3100s, 3100s-3110s, 3110s-3120s, 3120s-3130s, 3130s-3140s, 3140s-3150s, 3150s-3160s, 3160s-3170s, 3170s-3180s, 3180s-3190s, 3190s-3200s, 3200s-3210s, 3210s-3220s, 3220s-3230s, 3230s-3240s, 3240s-3250s, 3250s-3260s, 3260s-3270s, 3270s-3280s, 3280s-3290s, 3290s-3300s, 3300s-3310s, 3310s-3320s, 3320s-3330s, 3330s-3340s, 3340s-3350s, 3350s-3360s, 3360s-3370s, 3370s-3380s, 3380s-3390s, 3390s-3400s, 3400s-3410s, 3410s-3420s, 3420s-3430s, 3430s-3440s, 3440s-3450s, 3450s-3460s, 3460s-3470s, 3470s-3480s, 3480s-3490s, 3490s-3500s, 3500s-3510s, 3510s-3520s, 3520s-3530s, 3530s-3540s, 3540s-3550s, 3550s-3560s, 3560s-3570s, 3570s-3580s, 3580s-3590s, 3590s-3600s, 3600s-3610s, 3610s-3620s, 3620s-3630s, 3630s-3640s, 3640s-3650s, 3650s-3660s, 3660s-3670s, 3670s-3680s, 3680s-3690s, 3690s-3700s, 3700s-3710s, 3710s-3720s, 3720s-3730s, 3730s-3740s, 3740s-3750s, 3750s-3760s, 3760s-3770s, 3770s-3780s, 3780s-3790s, 3790s-3800s, 3800s-3810s, 3810s-3820s, 3820s-3830s, 3830s-3840s, 3840s-3850s, 3850s-3860s, 3860s-3870s, 3870s-3880s, 3880s-3890s, 3890s-3900s, 3900s-3910s, 3910s-3920s, 3920s-3930s, 3930s-3940s, 3940s-3950s, 3950s-3960s, 3960s-3970s, 3970s-3980s, 3980s-3990s, 3990s-4000s, 4000s-4010s, 4010s-4020s, 4020s-4030s, 4030s-4040s, 4040s-4050s, 4050s-4060s, 4060s-4070s, 4070s-4080s, 4080s-4090s, 4090s-4100s, 4100s-4110s, 4110s-4120s, 4120s-4130s, 4130s-4140s, 4140s-4150s, 4150s-4160s, 4160s-4170s, 4170s-4180s, 4180s-4190s, 4190s-4200s, 4200s-4210s, 4210s-4220s, 4220s-4230s, 4230s-4240s, 4240s-4250s, 4250s-4260s, 4260s-4270s, 4270s-4280s, 4280s-4290s, 4290s-4300s, 4300s-4310s, 4310s-4320s, 4320s-4330s, 4330s-4340s, 4340s-4350s, 4350s-4360s, 4360s-4370s, 4370s-4380s, 4380s-4390s, 4390s-4400s, 4400s-4410s, 4410s-4420s, 4420s-4430s, 4430s-4440s, 4440s-4450s, 4450s-4460s, 4460s-4470s, 4470s-4480s, 4480s-4490s, 4490s-4500s, 4500s-4510s, 4510s-4520s, 4520s-4530s, 4530s-4540s, 4540s-4550s, 4550s-4560s, 4560s-4570s, 4570s-4580s, 4580s-4590s, 4590s-4600s, 4600s-4610s, 4610s-4620s, 4620s-4630s, 4630s-4640s, 4640s-4650s, 4650s-4660s, 4660s-4670s, 4670s-4680s, 4680s-4690s, 4690s-4700s, 4700s-4710s, 4710s-4720s, 4720s-4730s, 4730s-4740s, 4740s-4750s, 4750s-4760s, 4760s-4770s, 4770s-4780s, 4780s-4790s, 4790s-4800s, 4800s-4810s, 4810s-4820s, 4820s-4830s, 4830s-4840s, 4840s-4850s, 4850s-4860s, 4860s-4870s, 4870s-4880s, 4880s-4890s, 4890s-4900s, 4900s-4910s, 4910s-4920s, 4920s-4930s, 4930s-4940s, 4940s-4950s, 4950s-4960s, 4960s-4970s, 4970s-4980s, 4980s-4990s, 4990s-5000s, 5000s-5010s, 5010s-5020s, 5020s-5030s, 5030s-5040s, 5040s-5050s, 5050s-5060s, 5060s-5070s, 5070s-5080s, 5080s-5090s, 5090s-5100s, 5100s-5110s, 5110s-5120s, 5120s-5130s, 5130s-5140s, 5140s-5150s, 5150s-5160s, 5160s-5170s, 5170s-5180s, 5180s-5190s, 5190s-5200s, 5200s-5210s, 5210s-5220s, 5220s-5230s, 5230s-5240s, 5240s-5250s, 5250s-5260s, 5260s-5270s, 5270s-5280s, 5280s-5290s, 5290s-5300s, 5300s-5310s, 5310s-5320s, 5320s-5330s, 5330s-5340s, 5340s-5350s, 5350s-5360s, 5360s-5370s, 5370s-5380s, 5380s-5390s, 5390s-5400s, 5400s-5410s, 5410s-5420s, 5420s-5430s, 5430s-5440s, 5440s-5450s, 5450s-5460s, 5460s-5470s, 5470s-5480s, 5480s-5490s, 5490s-5500s, 5500s-5510s, 5510s-5520s, 5520s-5530s, 5530s-5540s, 5540s-5550s, 5550s-5560s, 5560s-5570s, 5570s-5580s, 5580s-5590s, 5590s-5600s, 5600s-5610s, 5610s-5620s, 5620s-5630s, 5630s-5640s, 5640s-5650s, 5650s-5660s, 5660s-5670s, 5670s-5680s, 5680s-5690s, 5690s-5700s, 5700s-5710s, 5710s-5720s, 5720s-5730s, 5730s-5740s, 5740s-5750s, 5750s-5760s, 5760s-5770s, 5770s-5780s, 5780s-5790s, 5790s-5800s, 5800s-5810s, 5810s-5820s, 5820s-5830s, 5830s-5840s, 5840s-5850s, 5850s-5860s, 5860s-5870s, 5870s-5880s, 5880s-5890s, 5890s-5900s, 5900s-5910s, 5910s-5920s, 5920s-5930s, 5930s-5940s, 5940s-5950s, 5950s-5960s, 5960s-5970s, 5970s-5980s, 5980s-5990s, 5990s-6000s, 6000s-6010s, 6010s-6020s, 6020s-6030s, 6030s-6040s, 6040s-6050s, 6050s-6060s, 6060s-6070s, 6070s-6080s, 6080s-6090s, 6090s-6100s, 6100s-6110s, 6110s-6120s, 6120s-6130s, 6130s-6140s, 6140s-6150s, 6150s-6160s, 6160s-6170s, 6170s-6180s, 6180s-6190s, 6190s-6200s, 6200s-6210s, 6210s-6220s, 6220s-6230s, 6230s-6240s, 6240s-6250s, 6250s-6260s, 6260s-6270s, 6270s-6280s, 6280s-6290s, 6290s-6300s, 6300s-6310s, 6310s-6320s, 6320s-6330s, 6330s-6340s, 6340s-6350s, 6350s-6360s, 6360s-6370s, 6370s-6380s, 6380s-6390s, 6390s-6400s, 6400s-6410s, 6410s-6420s, 6420s-6430s, 6430s-6440s, 6440s-6450s, 6450s-6460s, 6460s-6470s, 6470s-6480s, 6480s-6490s, 6490s-6500s, 6500s-6510s, 6510s-6520s, 6520s-6530s, 6530s-6540s, 6540s-6550s, 6550s-6560s, 6560s-6570s, 6570s-6580s, 6580s-6590s, 6590s-6600s, 6600s-6610s, 6610s-6620s, 6620s-6630s, 6630s-6640s, 6640s-6650s, 6650s-6660s, 6660s-6670s, 6670s-6680s, 6680s-6690s, 6690s-6700s, 6700s-6710s, 6710s-6720s, 6720s-6730s, 6730s-6740s, 6740s-6750s, 6750s-6760s, 6760s-6770s, 6770s-6780s, 6780s-6790s, 6790s-6800s, 6800s-6810s, 6810s-6820s, 6820s-6830s, 6830s-6840s, 6840s-6850s, 6850s-6860s, 6860s-6870s, 6870s-6880s, 6880s-6890s, 6890s-6900s, 6900s-6910s, 6910s-6920s, 6920s-6930s, 6930s-6940s, 6940s-6950s, 6950s-6960s, 6960s-6970s, 6970s-6980s, 6980s-6990s, 6990s-7000s, 7000s-7010s, 7010s-7020s, 7020s-7030s, 7030s-7040s, 7040s-7050s, 7050s-7060s, 7060s-7070s, 7070s-7080s, 7080s-7090s, 7090s-7100s, 7100s-7110s, 7110s-7120s, 7120s-7130s, 7130s-7140s, 7140s-7150s, 7150s-7160s, 7160s-7170s, 7170s-7180s, 7180s-7190s, 7190s-7200s, 7200s-7210s, 7210s-7220s, 7220s-7230s, 7230s-7240s, 7240s-7250s, 7250s-7260s, 7260s-7270s, 7270s-7280s, 7280s-7290s, 7290s-7300s, 7300s-7310s, 7310s-7320s, 7320s-7330s, 7330s-7340s, 7340s-7350s, 7350s-7360s, 7360s-7370s, 7370s-7380s, 7380s-7390s, 7390s-7400s, 7400s-7410s, 7410s-7420s, 7420s-7430s, 7430s-7440s, 7440s-7450s, 7450s-7460s, 7460s-7470s, 7470s-7480s, 7480s-7490s, 7490s-7500s, 7500s-7510s, 7510s-7520s, 7520s-7530s, 7530s-7540s, 7540s-7550s, 7550s-7560s, 7560s-7570s, 7570s-7580s, 7580s-7590s, 7590s-7600s, 7600s-7610s, 7610s-7620s, 7620s-7630s, 7630s-7640s, 7640s-7650s, 7650s-7660s, 7660s-7670s, 7670s-7680s, 7680s-7690s, 7690s-7700s, 7700s-7710s, 7710s-7720s, 7720s-7730s, 7730s-7740s, 7740s-7750s, 7750s-7760s, 7760s-7770s, 7770s-7780s, 7780s-7790s, 7790s-7800s, 7800s-7810s, 7810s-7820s, 7820s-7830s, 7830s-7840s, 7840s-7850s, 7850s-7860s, 7860s-7870s, 7870s-7880s, 7880s-7890s, 7890s-7900s, 7900s-7910s, 7910s-7920s, 7920s-7930s, 7930s-7940s, 7940s-7950s, 7950s-7960s, 7960s-7970s, 7970s-7980s, 7980s-7990s, 7990s-8000s, 8000s-8010s, 8010s-8020s, 8020s-8030s, 8030s-8040s, 8040s-8050s, 8050s-8060s, 8060s-8070s, 8070s-8080s, 8080s-8090s, 8090s-8100s, 8100s-8110s, 8110s-8120s, 8120s-8130s, 8130s-8140s, 8140s-8150s, 8150s-8160s, 8160s-8170s, 8170s-8180s, 8180s-8190s, 8190s-8200s, 8200s-8210s, 8210s-8220s, 8220s-8230s, 8230s-8240s, 8240s-8250s, 8250s-8260s, 8260s-8270s, 8270s-8280s, 8280s-8290s, 8290s-8300s, 8300s-8310s, 8310s-8320s, 8320s-8330s, 8330s-8340s, 8340s-8350s, 8350s-8360s, 8360s-8370s, 8370s-8380s, 8380s-8390s, 8390s-8400s, 8400s-8410s, 8410s-8420s, 8420s-8430s, 8430s-8440s, 8440s-8450s, 8450s-8460s, 8460s-8470s, 8470s-8480s, 8480s-8490s, 8490s-8500s, 8500s-8510s, 8510s-8520s, 8520s-8530s, 8530s-8540s, 8540s-8550s, 8550s-8560s, 8560s-8570s, 8570s-8580s, 8580s-8590s, 8590s-8600s, 8600s-8610s, 8610s-8620s, 8620s-8630s, 8630s-8640s, 8640s-8650s, 8650s-8660s, 8660s-8670s, 8670s-8680s, 8680s-8690s, 8690s-8700s, 8700s-8710s, 8710s-8720s, 8720s-8730s, 8730s-8740s, 8740s-8750s, 8750s-8760s, 8760s-8770s, 8770s-8780s, 8780s-8790s, 8790s-8800s, 8800s-8810s, 8810s-8820s, 8820s-8830s, 8830s-8840s, 8840s-8850s, 8850s-8860s, 8860s-8870s, 8870s-8880s, 8880s-8890s, 8890s-8900s, 8900s-8910s, 8910s-8920s, 8920s-8930s, 8930s-8940s, 8940s-8950s, 8950s-8960s, 8960s-8970s, 8970s-8980s, 8980s-8990s, 8990s-9000s, 9000s-9010s, 9010s-9020s, 9020s-9030s, 9030s-9040s, 9040s-9050s, 9050s-9060s, 9060s-9070s, 9070s-9080s, 9080s-9090s, 9090s-9100s, 9100s-9110s, 9110s-9120s, 9120s-9130s, 9130s-9140s, 9140s-9150s, 9150s-9160s, 9160s-9170s, 9170s-9180s, 9180s-9190s, 9190s-9200s, 9200s-9210s, 9210s-9220s, 9220s-9230s, 9230s-9240s, 9240s-9250s, 9250s-9260s, 9260s-9270s, 9270s-9280s, 9280s-9290s, 9290s-9300s, 9300s-9310s, 9310s-9320s, 9320s-9330s, 9330s-9340s, 9340s-9350s, 9350s-9360s, 9360s-9370s, 9370s-9380s, 9380s-9390s, 9390s-9400s, 9400s-9410s, 9410s-9420s, 9420s-9430s, 9430s-9440s, 9440s-9450s, 9450s-9460s, 9460s-9470s, 9470s-9480s, 9480s-9490s, 9490s-9500s, 9500s-9510s, 9510s-9520s, 9520s-9530s, 9530s-9540s, 9540s-9550s, 9550s-9560s, 9560s-9570s, 9570s-9580s, 9580s-9590s, 9590s-9600s, 9600s-9610s, 9610s-9620s, 9620s-9630s, 9630s-9640s, 9640s-9650s, 9650s-9660s, 9660s-9670s, 9670s-9680s, 9680s-9690s, 9690s-9700s, 9700s-9710s, 9710s-9720s, 9720s-9730s, 9730s-9740s, 9740s-9750s, 9750s-9760s, 9760s-9770s, 9770s-9780s, 9780s-9790s, 9790s-9800s, 9800s-9810s, 9810s-9820s, 9820s-9830s, 9830s-9840s, 9840s-9850s, 9850s-9860s, 9860s-9870s, 9870s-9880s, 9880s-9890s, 9890s-9900s, 9900s-9910s, 9910s-9920s, 9920s-9930s, 9930s-9940s, 9940s-9950s, 9950s-9960s, 9960s-9970s, 9970s-9980s, 9980s-9990s, 9990s-10000s, 10000s-10010s, 10010s-10020s, 10020s-10030s, 10030s-10040s, 10040s-10050s, 10050s-10060s, 10060s-10070s, 10070s-10080s, 10080s-10090s, 10090s-10100s, 10100s-10110s, 10110s-10120s, 10120s-10130s, 10130s-10140s, 10140s-10150s, 10150s-10160s, 10160s-10170s, 10170s-10180s, 10180s-10190s, 10190s-10200s, 10200s-10210s, 10210s-10220s, 10220s-10230s, 10230s-10240s, 10240s-10250s, 10250s-10260s, 10260s-10270s, 10270s-10280s, 10280s-10290s, 10290s-10300s, 10300s-10310s, 10310s-10320s, 10320s-10330s, 10330s-10340s, 10340s-10350s, 10350s-10360s, 10360s-10370s, 10370s-10380s, 10380s-10390s, 10390s-10400s, 10400s-10410s, 10410s-10420s, 10420s-10430s, 10430s-10440s, 10440s-10450s, 10450s-10460s, 10460s-10470s, 10470s-10480s, 10480s-10490s, 10490s-10500s, 10500s-10510s, 10510s-10520s, 10520s-10530s, 10530s-10540s, 10540s-10550s, 10550s-10560s, 10560s-10570s, 10570s-10580s, 10580s-10590s, 10590s-10600s, 10600s-10610s, 10610s-10620s, 10620s-10630s, 10630s-10640s, 10640s-10650s, 10650s-10660s, 10660s-10670s, 10670s-10680s, 10680s-10690s, 10690s-10700s, 10700s-10710s, 10710s-10720s, 10720s-10730s, 10730s-10740s, 10740s-10750s, 10750s-10760s, 10760s-10770s, 10770s-10780s, 10780s-10790s, 10790s-10800s, 10800s-10810s, 10810s-10820s, 10820s-10830s, 10830s-10840s, 10840s-10850s, 10850s-10860s, 10860s-10870s, 10870s-10880s, 10880s-10890s, 10890s-10900s, 10900s-10910s, 10910s-10920s, 10920s-10930s, 10930s-10940s, 10940s-10950s, 10950s-10960s, 10960s-10970s, 10970s-10980s, 10980s-10990s, 10990s-11000s, 11000s-11010s, 11010s-11020s, 11020s-11030s, 11030s-11040s, 11040s-11050s, 11050s-11060s, 11060s-11070s, 11070s-11080s, 11080s-11090s, 11090s-11100s, 11100s-11110s, 11110s-11120s, 11120s-11130s, 11130s-11140s, 11140s-11150s, 11150s-11160s, 11160s-11170s, 11170s-11180s, 11180s-11190s, 11190s-11200s, 11200s-11





描かれる存在への、
終わりのなきジェラシー。

コレクション発表の会場で演出要素としても取り入れられたロバート・R・マクゴニゴンのイラストは、プリントモチーフとしてもお目見え。はりのあるダブルフェイスのウールシルクで仕立てた音楽家のノースリーブトップと膝丈のタイトスカートをのせて登場した。トップ ¥101,620、スカート ¥211,680（ともに予定価格）/ともにプラダ（プッダ ジャパン）カスタマー・リレーションズ]

audience FIGARO japon 124





JAPAN_FIGARO JAPON_PRADA_20.07.2017



針の音を背に刻み、
つかの間の、待つ女。

お顔を施したデヴィッド・スエードの切り替えを施したコートは、縞縞をデヴィッドの一方でタフな存在感を際立たせる。キハアニットも格子柄スカートとの連続のコントラストも心憎い。コート ¥1,557,760、カーディガン ¥139,320、フェザー付スカート (参考色、商品はフェザーが黒、スカートがデラコックで黒) ¥22,100、パンプス ¥155,520 (すべて税込価格) 以上デヴィッド・スエード・カスタマー・リレーションズ

127 window FIGARO japon

PRADA

ニット



ニットの温もりに、全身で包まれていたい。

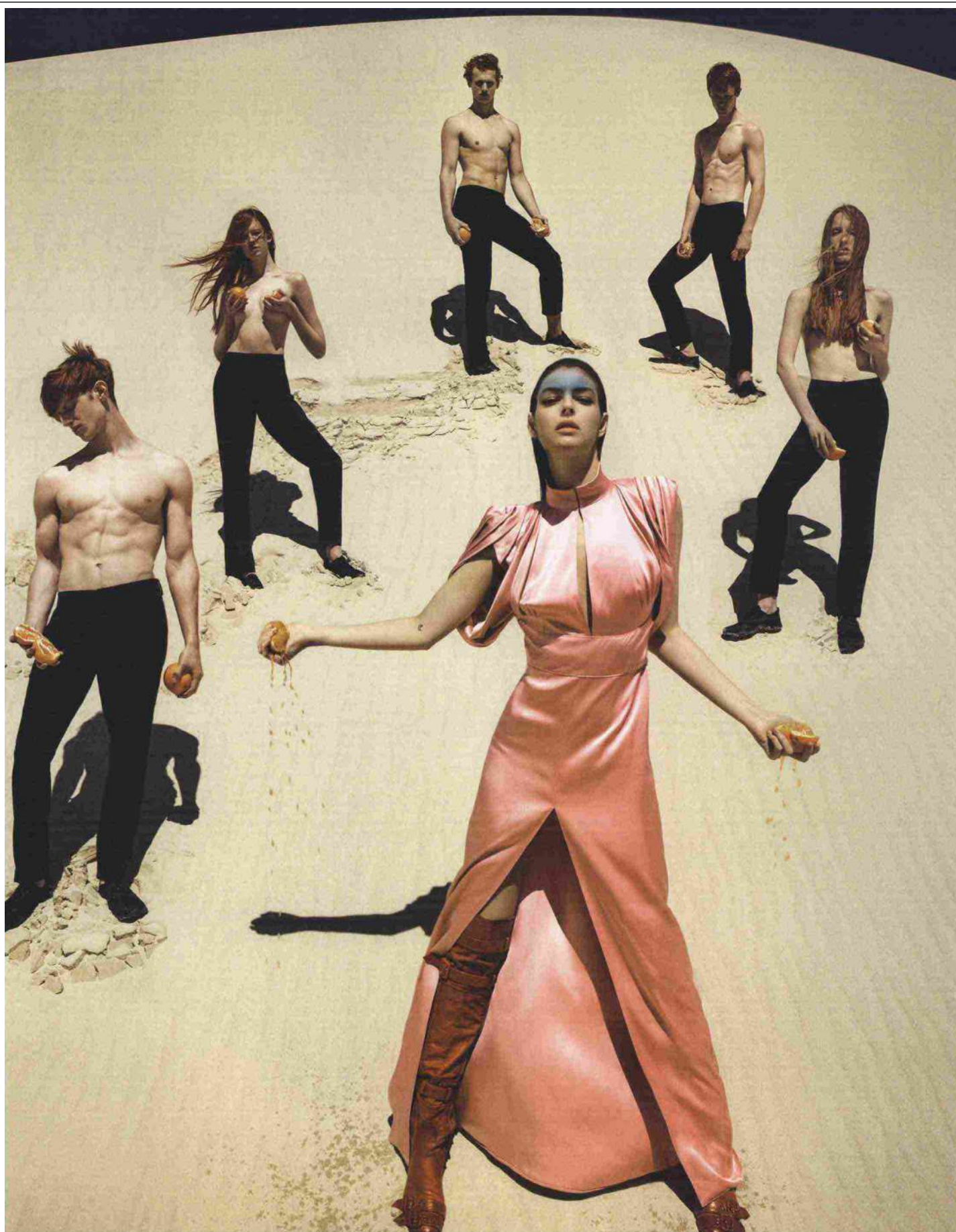
ふれふわのモヘア素材の心地よいニットに全身を包まれるという至福。繊細な手仕事を感ぜさせるビーズの刺繍のカーディガンに袖を通すと、なぜか気持ちがおぼろしくなるから不思議だ。プラダのニットには、まるで親子代々、母から娘に継がれた宝物のような温もりがある。

カーディガン ¥532,440、ニットトップ ¥483,840、スカート ¥392,040、ニットスカーフ ¥133,320、シューズ ¥155,520 (すべて予定価格) / 以上プラダ「プラダ ジャパン・コレクション」 柳子「ライブラリーチェア」 (W46.5×D45.5×H70cm) ¥399,600 / キャラメル・サイン

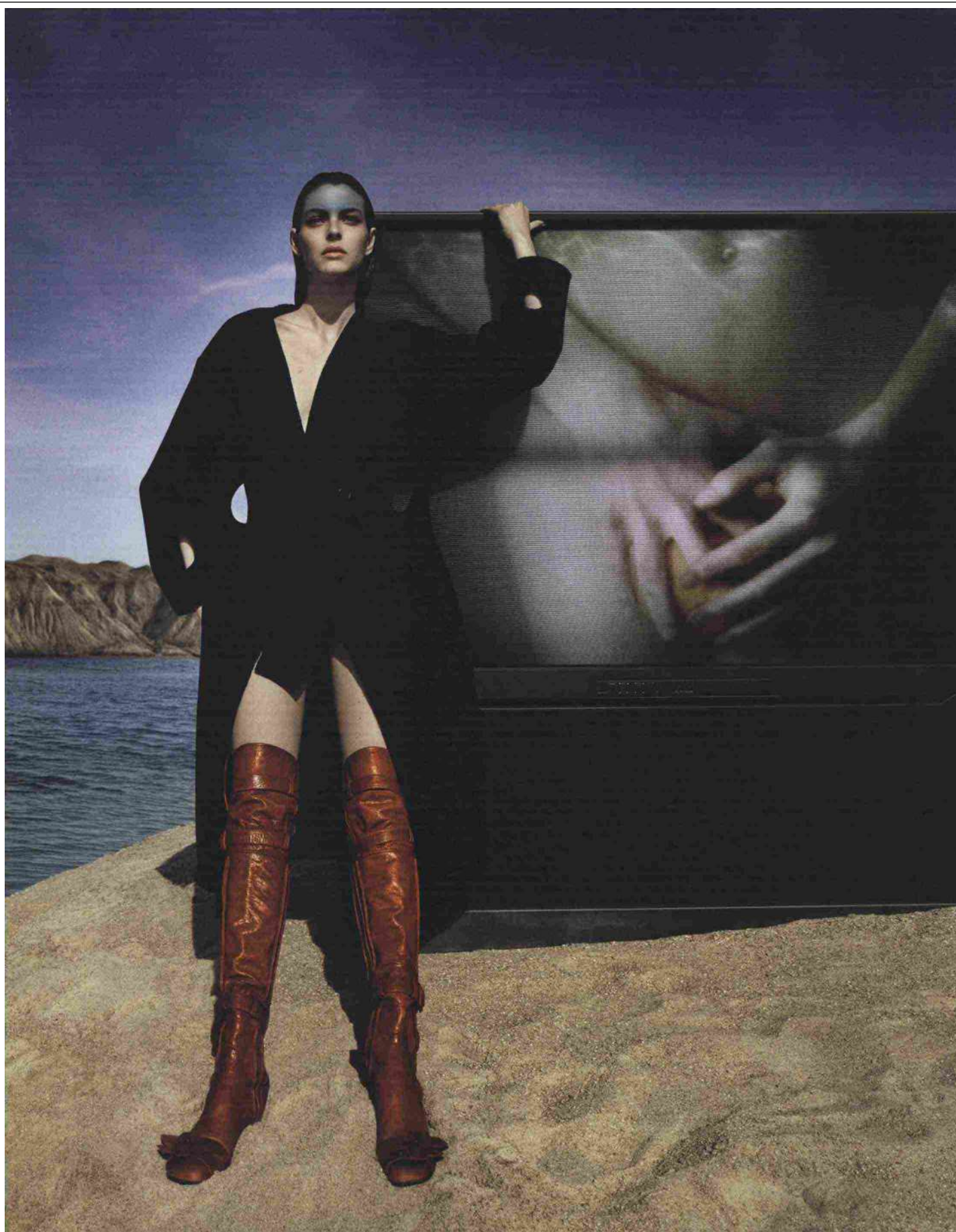
081 window FIGARO japan

MORE IS MORE
Think of glitter as an accessory to your accessories. (Still with us?) Daly coated lids in yellow and aqua glitter to bring on more color and more shine. The one rule here: Don't hold back. On Lou Schoof: Embroidered sweater and wool top by Prada. Earrings by Oscar de la Renta. Oh Sugar lip balm in Cupcake by CoverGirl. Details, see Shopping Guide.





Ritaglio stampa ad uso esclusivo del destinatario, non riproducibile.



Ritaglio stampa ad uso esclusivo del destinatario, non riproducibile.

Codice abbonamento: 044119



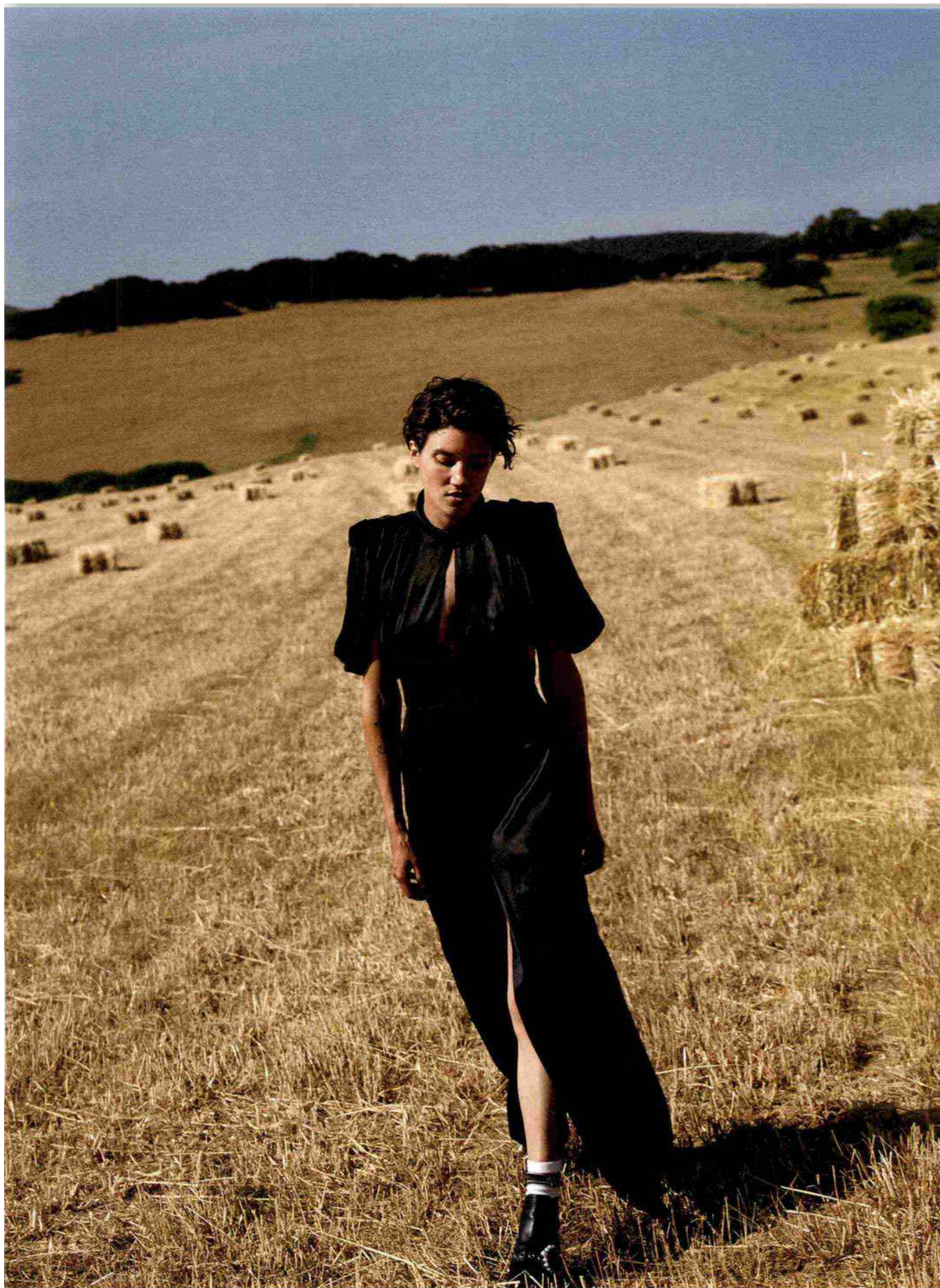
CONTRASTI
SOTTO IL SOLE.
SCOZZESE
E RICAMI,
CASHMERE
E PELLE NUDA
Cardigan
di cashmere
e mohair
con ricami di pietre
a contrasto,
Prada, come
la longuette
a tema; top a
triangolo checked,
RRD Roberto Ricci
Designs (84 euro
il completo).

AMICA

Mensile

PRADA

Data 08-2017
Pagina 106/21
Foglio 16 / 16



Ritaglio stampa ad uso esclusivo del destinatario, non riproducibile.

Codice abbonamento: 044119



la Repubblica

Settimanale

PRADA

Data 15-07-2017

Pagina 68/75

Foglio 9 / 10



Ritaglio stampa ad uso esclusivo del destinatario, non riproducibile.

Codice abbonamento: 044119



3

Pode vir QUENTE

À esquerda, blazer, saia, cinto (R\$ 4.310) e escaupins (R\$ 5.040). À direita, jaqueta, saia e escaupins (R\$ 5.040). Todas as peças são do pre-fall 2017 da Prada

Styling: Alexandra Benenti

JAQUETA DE PELO + TRICÔ

O casaco de pelo (na foto, à direita) que é item indispensável nas baixas temperaturas aparece agora com ombros amplos e silhueta levemente oversized – na Prada, ganha versão ainda mais atual, decorado com tachas. O truque para sair do lugar-comum é apostar em um rico jogo de texturas e combinar a peça com saia de tricô, em vez de calça de couro (que seria o complemento mais óbvio).

BLAZER + CINTO LARGO

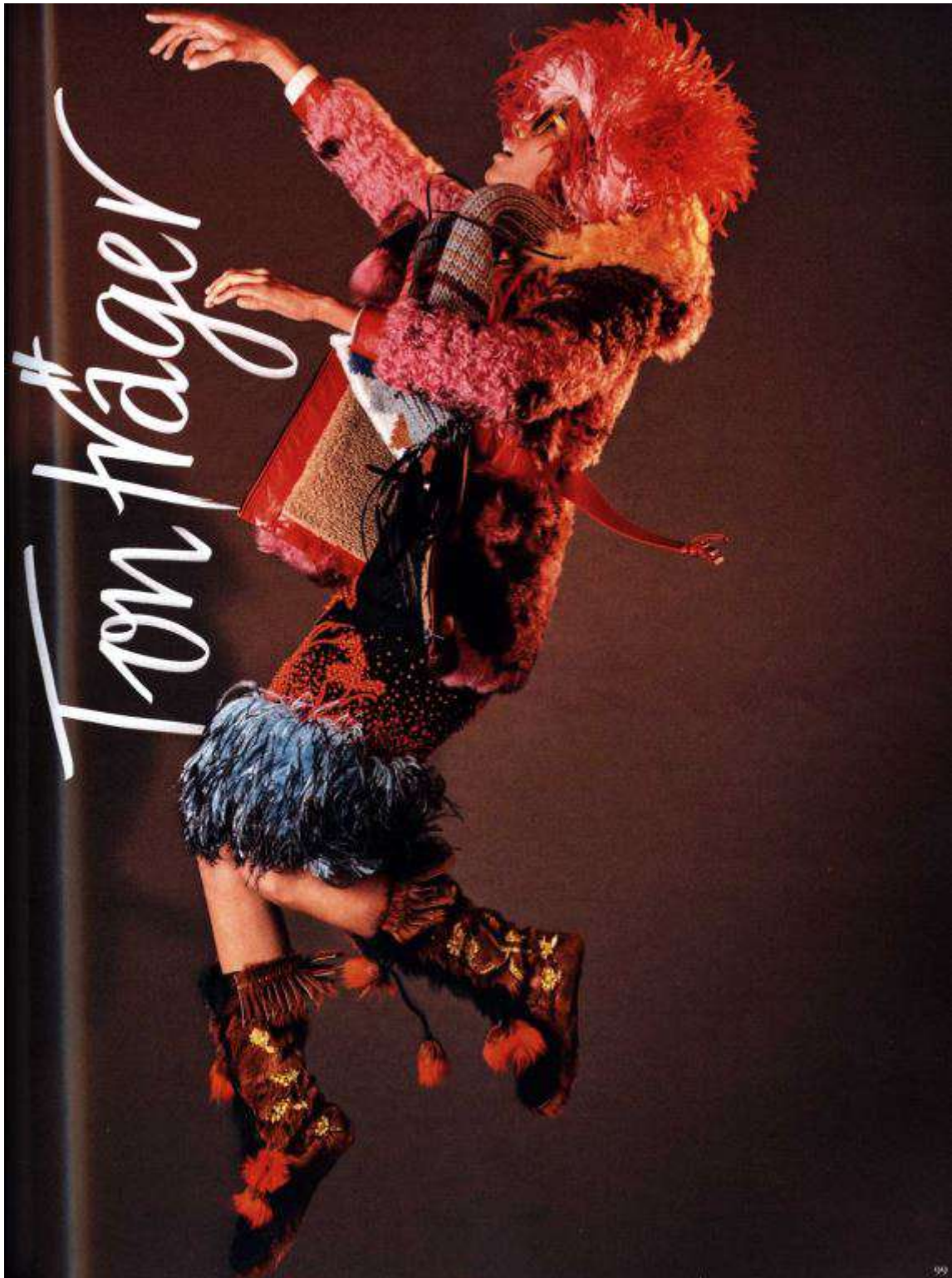
O cinto *statement*, que foi tendência no verão internacional, segue inverno adentro: escolha uma peça larga e com personalidade para um upgrade instantâneo em seu blazer ou jaqueta preferidos. Dispense o top e deixe o casaco brilhar como protagonista do look.

Adote já os seis modelos de casaco incontornáveis que irão atualizar seu look neste alto inverno e os truques de styling certos para usá-los da maneira mais atual

POR OLÍVIA NICOLETTI FOTO IVAN ERICK



Más es (mucho) más. Pese a jugar con el feísmo cada temporada, Miuccia Prada ha conseguido que su marca sea el objeto de deseo de todas esas mujeres que buscan darle una vuelta de tuerca al concepto (manido) de elegancia. Todas las musas de la diseñadora son mucho más que caras bonitas. En el cine, Ruth Negga y Lupita Nyong'o. En las pasarelas, Sasha Pivovarova y Gemma Ward; dos tops que apenas se dejan ver, salvo cuando la Signora las reclama. Tal es su poder.





PRADA

Rotes Trägerkleid aus
Alpaka-Mohair, mit Vo-
lont, um 1450 €.
Pumps: Francesco Russo

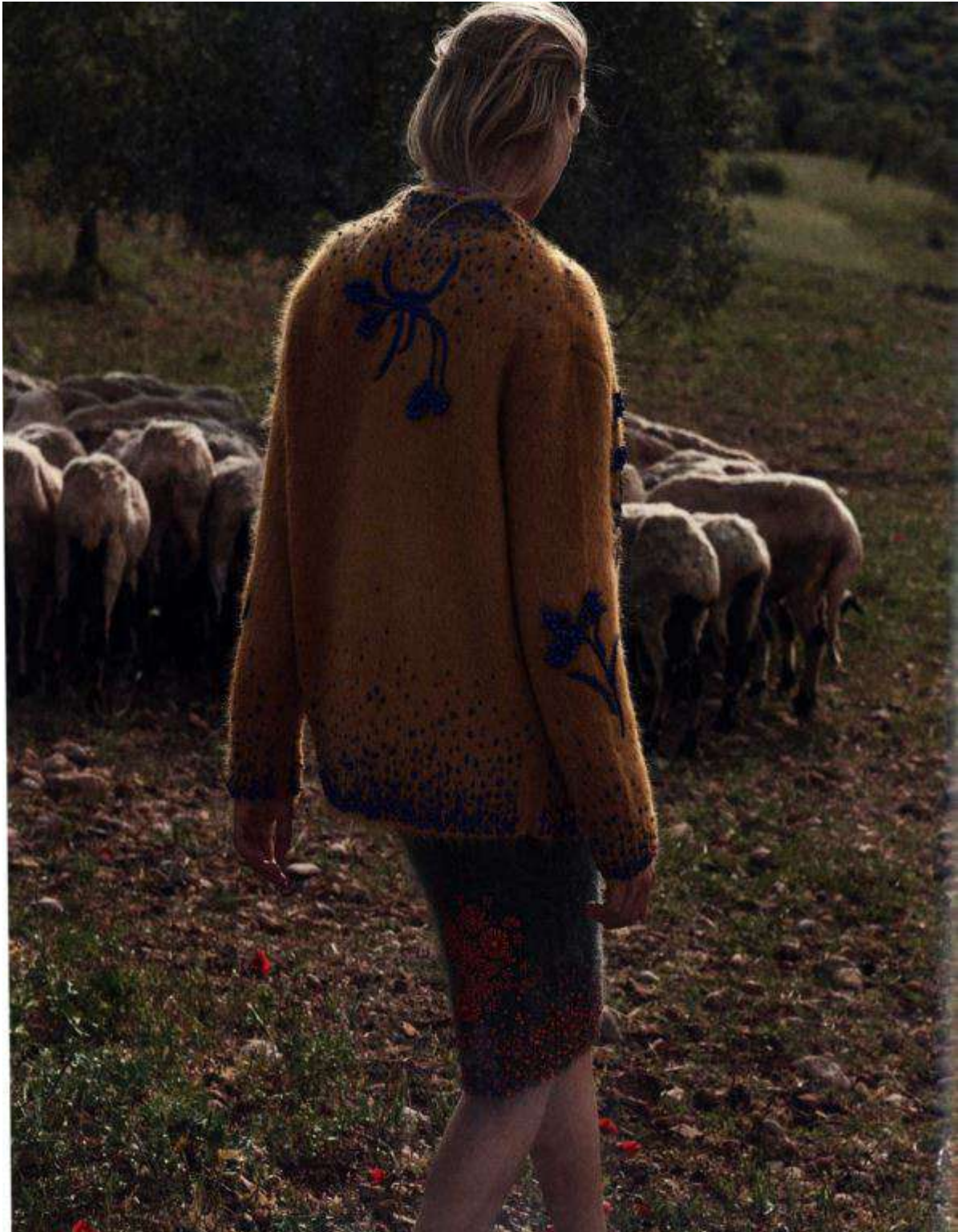
STYLINGTIPP

Rot duldet keine
Nebenbuhler: Heißt:
Starkes Make-up
ist absolut tabu. Beste
Stylingpartner sind:
zarte Spätsommer-
bräune, nudefarbener
Lippenstift und Augen-
brauenbetonung.



Germania-HARPER'S BAZAAR







Diese Seite:
70s ohne Cord? Wohl
kaum. Jacke mit
aufgesetzten Taschen,
dazu Bluse mit Blumen-
print, Rock mit Federn
am Saum und Baker-
Boy-Mütze aus Cord,
alles von **Prada**

Linke Seite:
Weniger ist manchmal
mehr. Fake-Fur-Weste
von **Stella McCartney**,
Jeans von **Levi's**










ПЛАТЬЯ ИЗ ИСКУС-
СТВЕННОЙ КОЖИ
С ОТДЕЛКОЙ ИЗ МЕХА
ЛИСЫ, КОЖАНЫЕ
САПОГИ. ВСЕ PRADA.
ЗОЛОТЫЕ СЕРЬГИ,
КОЛЬЦА И БРАСЛЕТЫ
С БРИЛЛИАНТАМИ,
COMPTONEDWORKS

PETER LINDBERGH

2017 ИЮН VOGUE 33



MISHA TAILOR



В ИЮЛЕ ЛЮБУЕМСЯ
ТВОРЕНИЯМИ
CHANEL
В ИНТЕРЬЕРАХ
СТАРОЙ
МОСКОВСКОЙ
КВАРТИРЫ
И ВСПОМИНАЕМ
БЕЗЗАБОТНЫЕ
СТУДЕНЧЕСКИЕ
ГОДЫ, ГЛЯДЯ
НА ВЕЩИ ИЗ PRE-
FALL-КОЛЛЕКЦИИ

МЕХОВОЕ ПАЛЬТО,
PRADA; СЕРЬГА,
ARIEL GORDON;
МАЛЕНЬКАЯ
СЕРЬГА, **JACQUE**
AÏCHE; КОЛЬЦО,
СОБСТВЕННОСТЬ
МОДЕЛИ

marie claire

FASHION



RUSSIA - HARPER'S BAZAAR - PRADA DONNA - 04.07.2017





سبتره ونبور
وخرام من
صندل PRADA
من HERMES

SWEATER, SKIRT,
BELT, PRADA
SANDALS
HERMES, TIGHTS,
STYLIST'S OWN

Harper's BAZAAR

СТИЛЬ

ВЫСОКИЙ СЕЗОН

Почему бы вам не... сформировать межсезонный гардероб, нежась в лучах июлевого солнца? Отпуск не помеха изучению новых Pre-fall-коллекций, особенно если вам не терпится как можно скорее вернуться к многослойности, насыщенным тонам и теплым фактурам.

фото: Ruo Bing Li

Стили: Yulko Ikebata

Модель: Liene Rodina @ Fusion Models NY

На Лине: жакет, юбка, все Prada;

блуза, You As; серьга, Cornelia Webb;

колготы, We Love Colors

AMICA

MODA / BELLEZZA / ACTIVE / KITCHEN / DAILY TIPS / VIDEO / PARTY & PEOPLE / INSTALOOK

Radiography- Prada Velvet Cahier

L'anatomia della moda, tra lavorazioni certosine, raffinata tradizione e ricercata tecnologia



ARREDAMENTO
60 idee per uno studio in casa
Soluzioni smart per lavorare a casa

Prada

Diagnosi: borsa Velvet Cahier

Descrizione macroscopica: linea geometrica e texture luxury con effetto trompe l'oeil

Descrizione microscopica: sono i libri antichi a ispirare i dettagli della nuova Velvet Cahier, scrigno prezioso in velluto ricamato che inganna la vista. La parte superiore, in colore a contrasto, ricorda le coste dei libri mentre la pattina e i dettagli rimandano ai taccuini, robusti e sicuri, custodi di pensieri e racconti. La tracolla mantiene i ricami e i toni, mentre dettagli e borchie dorate completano e illuminano

Terapia: combattere il caldo afoso pensando ai primi look autunnali, mescolare stivali in suede patchwork velluto, piume e microcheck, frange e stampe. Colorful.

50

Testo Gaia De Vecchi - 07 luglio 2017

TAGS

borsa, prada, velvet, velvet cahier, radiography

ARTICOLI CORRELATI



DAILY TIPS
Radiography- La Rockstud Spike di Valentino

LINK



DAILY TIPS
Radiography- la Falabella box di Stella McCartney

Ritaglio stampa ad uso esclusivo del destinatario, non riproducibile.



SE TE VE LA ETIQUETA

ETIQUETTE BAG DE PRADA

La idea

El ready-to-wear y los accesorios de la firma italiana se alinean todavía más a través de la etiqueta.

Estilo

Considéralo tu nuevo aliado para el día a día. Suave, cómodo y ligero; al retirar el asa se transforma.

Material

Elaborado en piel de becerro (el interior es de ante azul) y con aplicaciones metálicas.

Flechazo

En rosa, combínalo con otras prendas en la misma gama de color para dar con el look del momento.

¿Sabías que...?

Prada cuestiona así el papel del logo como símbolo de estatus. Lo importante siempre está en el interior...



多様性のある“女性らしさ”を、さまざまな角度から切り取って。

Jessica Chastain

ジェシカ・チャステイン

2017年プレフォールの広告
ビジュアルのひとつもジェ
シカ・チャステインが主演。
彼女自身のポートレートに
も見えるキャンペーン写真
は、ウィリー・ヴァンデル
ベルが撮影。



ミウッチャ・プラダは、常に半歩先を行くモダンな女性像を表現してきた。成熟した女性が持つ強さやしなやかさ。そして、時折見せるイノセントさ。自由なマインドとエレガンスが融合するクリエイションには、そんなコントラストのあるムードが添えられている。2017年リゾートコレクションから2シーズンほど、広告キャンペーンの顔を務める女優のジェシカ・チャステインもまた、マチュアな魅力と知性が調和した、現代的な女性だ。その強い純な

る存在感が、ミウッチャの描くプラダの世界観と見事にシンクロしている。そして、新作のバッグコレクションにおいても、メジンらしいコントラストが際立っている。「プラダ エディケット」と名付けられた新作は、ウエアに使用されているブルーのインサイドラベルをレザーにプリントし、バッグの外側に配した、カジュアルかつ、上品なシリーズ。ラベルのよ

アイコニックな素材、ブラックナイロンを使用。同色のレザーストラップに豪華なファーハンドルをプラスするなど、自分らしくアレンジできる仕様に。バッグ「プラダ エディケット」(H23×W35×D14cm) ¥205,800、ファーハンドル ¥85,400 (ともに税込価格) / ともにプラダ(プラダ ジャパンカスタマーレーションズ)

085 nouvelle FIGARO japon

JAPAN_FIGARO JAPON_PRADA_20.07.2017

BEST

MYSTIC VIBE

EDITOR : HAN HYE JI / WRITER : LEE JUNG MI
PHOTOGRAPHER : PARK WON TAE

프라다의 에니탈리에 콜로저 백은 정제된 무드 속에서 발
현될 수 있는 극적인 변주들이 녹아 있다. 2016 F/W 컬렉
션에서 선보인 고서를 재해석한, 시크한 사각 형태와 블랙
컬러를 베이스로 다양한 디테일을 곳곳에 배치했다. 물결
커버의 상단에는 사피아노 소재를, 나머지 부분에는 시티
키프 소재를 적용함으로써 광택과 텍스처를 달리하는 방
식으로 은은한 포인트를 주는 것부터, 벽의 존재감을 형상
에 드러내는 볼드한 버클 장식까지 더해졌다. 신비하고 연
티크한 느낌과 별 모티프 버클은 그 모습뿐 아니라 만들어
진 과정과 기술도 특별하다. 정밀하게 주조된 황동 소재로
여러 단계 불림과 왁스 도포, 불림 과정을 반복하고 전기 장
치의 연마 과정을 거쳐 완성한 것. 한편, 볼 핸들 부부와 바
닥 모서리 부분에는 버클과 같은 색상의 플레이트를 장식
해 고급스러운 느낌과 함께 견고하게 마무리했다.



제품 3594181376-9018



Prada حقيبتان من



Diese Seite: Mary Jane aus Satin mit handgestickter Blume, großem Knopf am Riemen sowie Zierkugeln und Swarovski Kristallen am Absatz, um 950 €, von **PRADA**. Linke Seite: Lipstick Case aus goldfarbenem Metall und Emaille mit Nieten, um 750 €, von **VALENTINO GARAVANI**.



Sandalias de satén con plumas (c.p.v.) de **Prada**.

EL COLOR DEL AMOR

THE ATTITUDE TUFT LOVE

STAY ONE STEP AHEAD WITH THE MOST COVETED MATERIAL FOR NEXT SEASON: SHEARLING



PHOTOGRAPH: JODY TODD. RETOUCHING: BRETT MARTINDALE-DURNING

One of fashion's favourite questions is: how far can we go? One of its favourite answers is: all the way. Hence the biannual parade of ever-crazier creations: sheepskin straitjackets, full-face fur masks, suits made from balloons. All of it innovative, but unlikely to impact on our actual wardrobes. Miuccia Prada prefers to ask: how far can we go and still make clothes wearable? It's why she, more than anyone else, has defined how we dress today. This season, she asked herself how far we could go with these sensational slip-ons. The answer, of course, was all the way – all the way to the moon.
Shearling slippers, £850, **Prada** (prada.com). Cotton trousers, £1,030, **Brunello Cucinelli** (brunellocucinelli.com).

July/August 2017 Condé Nast Traveller 89

'It's not about gender': Gigi Hadid poses with boyfriend Zayn Malik for Vogue as they talk stealing clothes from each other's closets

By [Heidi Parker For Dailymail.com](#)

They have been the 'it' couple for the past year. And on Thursday [Gigi Hadid](#) and [Zayn Malik](#) sealed their reputation as the King and Queen of the Millennials by appearing together on the August cover of [Vogue](#).



Double vision: In the issue the two - who calls New York City home base - talked about wearing each other's clothing. He admitted to borrowing an Anna Suit shirt while she said he 'shops in his closet'

<http://www.dailymail.co.uk/tvshowbiz/article-4693158/Gigi-Hadid-poses-boyfriend-Zayn-Malik-Vogue.html> ¹

¹ GRAN BRETAGNA-DAILYMAIL.CO.UK-PRADA-14.07.17

Blythe And Gwyneth Make The Case For Grown-Up Mother-Daughter Dressing

by NAOMI PIKE Friday 21 July 2017

WITH their floral ensembles, **Gwyneth Paltrow** and her mother, Blythe Danner, have proven that mother-daughter dressing goes beyond toddlers in smock dresses and mums in coordinating summery tea dresses.



Attending a Goop event in the Hamptons, both wore separates in chinoiserie-inspired prints by **Prada**. Paltrow tucked a buttoned-up shirt into tailored cropped trousers while Danner's contribution came in the shape of a longer-length tunic, belted at the waist and worn with wide-leg trousers. Part of an exclusive collection for **My Theresa**, both looks are still available on their site.

<http://www.vogue.co.uk/article/gwyneth-paltrow-blythe-danner-floral-matching-outfits> ¹

¹ GRAN BRETAGNA-VOGUE.CO.UK-PRADA-GWYNETH PALTROW-BLYTHE DANNER-RTW-21.07.17

DAILYMAIL.CO.UK

Honeymoon is over! Jessica Chastain rocks pajama suit as she returns to LA with new husband Gian Luca Passi de Preposulo after wedding

By [Dailymail.com Reporter](#) PUBLISHED: 22:52 BST, 19 July 2017

All good things must come to an end. On Tuesday, Jessica Chastain and her new husband, Gian Luca Passi de Preposulo, touched down in Los Angeles after celebrating their honeymoon. The longtime loves tied the knot in Italy back in June.



Pajama party: While at LAX, the 40-year-old rocked patterned pajamas

<http://www.dailymail.co.uk/tvshowbiz/article-4712270/Jessica-Chastain-new-husband-return-honeymoon.html>¹

¹ GRAN BRETAGNA-DAILYMAIL.CO.UK-PRADA-JESSICA CHASTAIN-RTW-20.07.17

Age-defying Susan Sarandon, 70, power dresses in statement suit as pal Goldie Hawn, 71, slips into flowing jumpsuit for Berlin Fashion Week

By [Lily Waddell For Mailonline](#) PUBLISHED: 02:04 BST, 6 July 2017

They played the double act in 2002 American comedy flick *The Banger Sisters*. And Hollywood stars Susan Sarandon, 70, and Goldie Hawn, 71, showed off their age-defying beauty as they jetted into [Germany](#) for Berlin Fashion Week on Wednesday.



The BAFTA winner teased a glimpse of her cleavage in the plunging neckline of her silk top, framed with lace edging. Keeping in the same theme, she matched her fashionable attire with a Prada handbag and pointed sky-scraper heels.

<http://www.dailymail.co.uk/tvshowbiz/article-4669588/Susan-Sarandon-70-Goldie-Hawn-71-Berlin.html>¹

¹ GRAN BRETAGNA-DAILYMAIL.CO.UK-PRADA-SUSAN SARANDON-HANDBAG-06.07.17

INSTYLE.CO.UK

Alexa Chung Cannot Stop Wearing This Men's Prada Sweater



by: [Olivia Bahou](#) 7 JUL 2017

[Alexa Chung](#) is a bona fide style icon and a designer in her own right, having started her [eponymous fashion line](#) earlier this summer, so on this week's episode of *Dirty Laundry*, *InStyle US*'s Editor-in-Chief [Laura Brown](#) asked the Brit to dish on the clothing and accessories that have a special place in her heart.

First up, Chung brought out a gray [Prada](#) sweater with green stripes that she actually picked up in the men's section. "I think I was killing time between meetings and I got lured into the Prada store, and I just felt like I couldn't leave without it. Sometimes I have this thing with clothes where it's so meant to be that it's almost boring to buy it. It was expensive but I have worn it enough to justify the cost," she told Brown.

Kate Middleton loves this £550 Prada sandal so much that she wore it in two different colours this week

The scalloped stiletto is a far cry from the Duchess of Cambridge's usual shoe

CHARLIE TEATHER

3 days ago

She debuted a cropped hair cut at **Wimbledon** two weeks ago and plumped for a plunging neckline at a Buckingham Palace banquet last week, but the **Duchess of Cambridge's brave new look** wasn't finished there.

Having surprised fashion critics with a pair of scalloped suede **Prada** sandals in burgundy at the Natural History Museum last Friday, Kate Middleton has hinted at a seemingly similar fondness for Miuccia's handiwork ad the rest of us having stepped out in the style twice more since. Opting for a cream pair to pack for this week's royal tour of Poland and Germany, the Duchess has worn the £550 shoe with a teal and grey Markus Lupfer midi and a bold red **Alexander McQueen** gown with a Bardot neckline.



Elegant in its simplicity, the shoe's scalloped detailing is a modern take on the strappy sandal spotted underpinning 95% (approx.) of evening looks over the last 3 years.

<http://www.standard.co.uk/fashion/trends/kate-middleton-loves-this-550-prada-sandal-so-much-that-she-wore-it-in-two-different-colours-this-a3593251.html> ¹

¹ GRAN BRETAGNA-STANDARD.CO.UK-PRADA-KATE MIDDLETON-FOOTWEAR-24.07.17