

PRADA Group

**WHO
WE ARE**

INDEX

1. Group	03
2. History	18
3. Brands	21
4. ESG	25
5. Fondazione Prada	36

Section 1

GROUP

Prada Group

Highlights

Vision

Purpose

Values

Corporate Governance Model

Board of Directors

Business Model

Global Presence

Production Sites

Prada Group «garden factories»

Group Retail Network

Epicenters



Group

Prada Group

Pioneer of a dialogue with contemporary society across diverse cultural spheres and an influential leader in luxury fashion, Prada Group founds its identity on essential values such as creative independence, transformation, and sustainable development, offering its brands a shared vision to interpret and express their spirit.

The Group owns some of the world's most prestigious luxury brands, Prada, Miu Miu, Versace, Church's, Car Shoe, the historic Pasticceria Marchesi and Luna Rossa, and works constantly to enhance their value by increasing their visibility and appeal.

The Group designs, manufactures and distributes ready-to-wear collections, leather goods and footwear in more than 70 countries through a network of 843 stores as well as e-commerce channels, selected e-tailers and department stores around the world.

The Group, which also operates in the eyewear and beauty sector through licensing agreements, has 25 owned factories and 17,901 employees.

Prada S.p.A. is listed on the Hong Kong Stock Exchange as 1913.

Highlights

€ **5.7** bln
Total Net Revenues
FY 2025

17,901
Headcount

25
Industrial Facilities

843
Directly
Operated Stores

+70
Countries

At December 31, 2025, including Versace

Vision



Thorough **observation** and **curiosity** for the world around us have always been at the heart of the **creativity** and **modernity** of the Prada Group. In society, and thus in fashion, which is somehow a reflection of it, the only constant is **change**.

The **transformation** and **innovation** of references, at the core of any evolution, led us to interact with **different cultural disciplines**, at times apparently far from our own, allowing us to capture and **anticipate the spirit of the times**.

Today this is no longer enough:
we must be the Drivers of Change, with the flexibility required to translate the demands of the market and the society into tangible actions that inform our way to do business.”

**MIUCCIA PRADA
& PATRIZIO BERTELLI**



Purpose

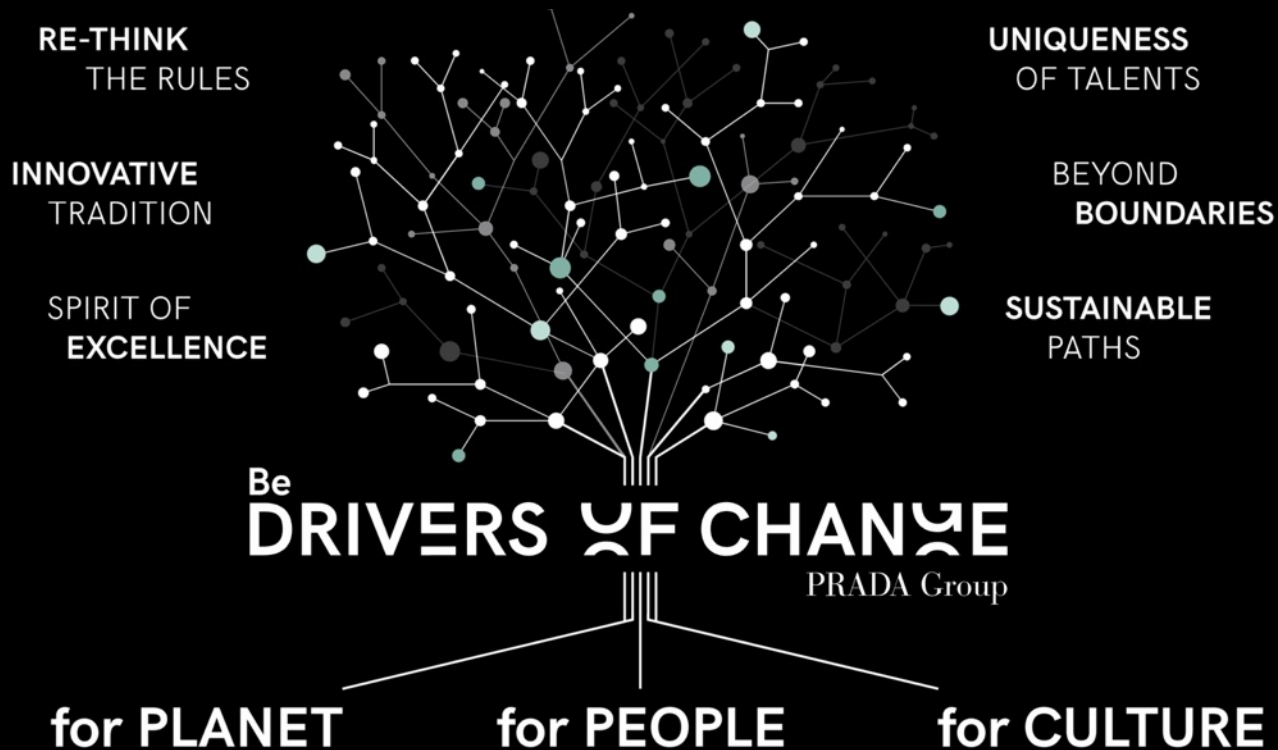
With a thoughtful and pioneering vision
the Prada Group is a global leader in luxury.

By being

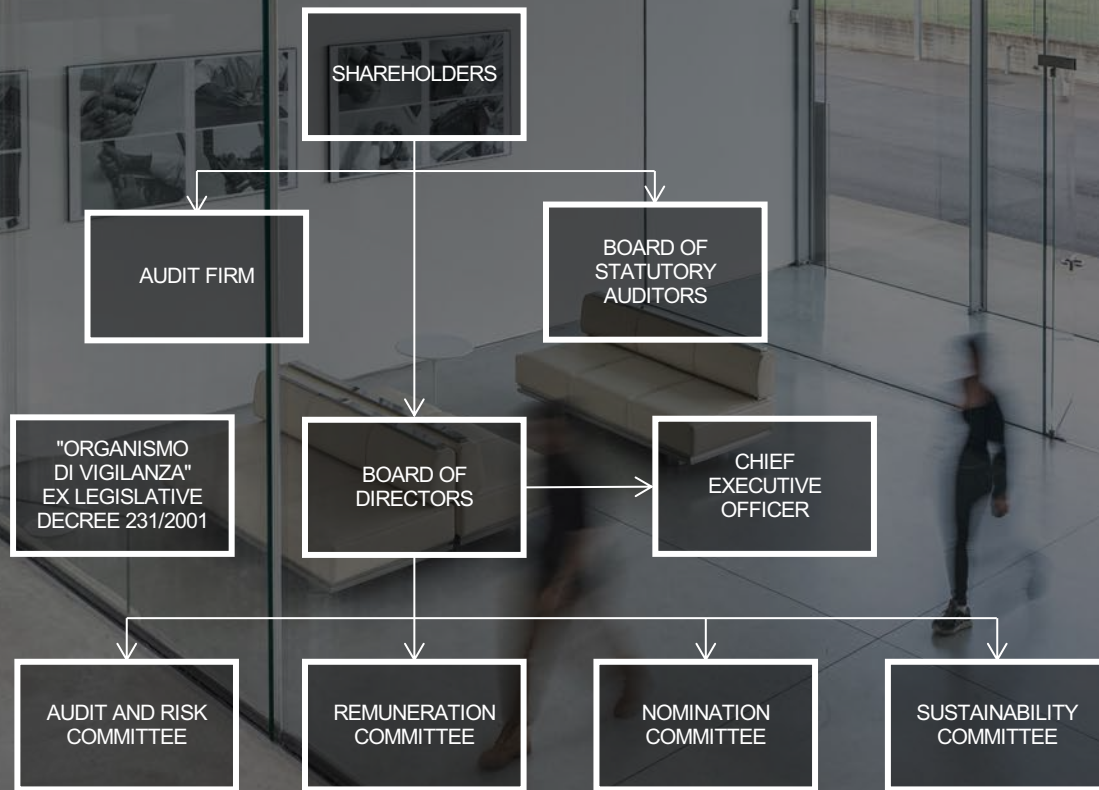
DRIVERS OF CHANGE

we offer an unconventional dialogue and interpretation of the contemporary,
as expression of our way of doing business
for **PLANET, PEOPLE and CULTURE.**

Values



Corporate Governance Model



Board of Directors

The Board of Directors is the Company's highest decision-making body vested with all the ordinary and extraordinary management powers.

The Board of Statutory Auditors oversees the compliance of the Company with the By-laws and the applicable laws and regulations, as well as the respect of the principles of proper management.

Prada Group's financial statements are audited by an external audit firm.

The current composition of the Board of Directors is effective as of July 30th, 2025.



**MIUCCIA PRADA
BIANCHI**
Executive Director



**PATRIZIO
BERTELLI**
Chairman of the
Board of Directors
and Executive
Director



**ANDREA
GUERRA**
Chief Executive
Officer and
Executive Director



**PAOLO
ZANNONI**
Executive Deputy
Chairman of the
Board of Directors and
Executive Director



**LORENZO
BERTELLI**
Executive
Director



**ANDREA
BONINI**
Chief Financial
Officer and
Executive Director



**PAMELA
CULPEPPER**
Independent
Non-Executive
Director



**ILARIA
RESTA**
Independent
Non-Executive
Director



**CRISTIANA
RUELLA**
Independent
Non-Executive
Director



**ANNA MARIA
RUGARLI**
Independent
Non-Executive
Director



YOËL ZAOUÏ
Independent
Non-Executive
Director and Lead
Independent Director

Business Model

The success of the Group's brands is based on the original business model, which combines skilled craftsmanship with industrial manufacturing processes.

This integration enables the Group to translate its innovative fashion concepts into viable commercial products while retaining flexible capacity, technical control over know-how, quality and sustainability.

STYLE & DESIGN
AND PRODUCT
DEVELOPMENT

COLLECTION
OF ORDERS

Showroom Presentation
Sales campaign
Fashion shows

SOURCING

Quality Control
Worker Safety

Direct Distribution 91%

Indirect Distribution 9%

PRODUCTION

DISTRIBUTION

Industrial Facilities

The Group owns 25 industrial facilities, 23 of them in Italy.

From 2015, the Group launched an investment plan aimed at upgrading and reorganizing the entire manufacturing structure in order to preserve the artisanal know-how, support the technological development of the production processes, and improve the quality of the work environment.

Four of this sites are called “garden factories”, buildings designed by Guido Canali balancing architecture and nature to embody Patrizio Bertelli’s vision about the quality of the work environment and how it impacts people’s well-being.

“

Doing business is a social act that implies a real responsibility towards work, workers and the territory.”

PATRIZIO BERTELLI

Group

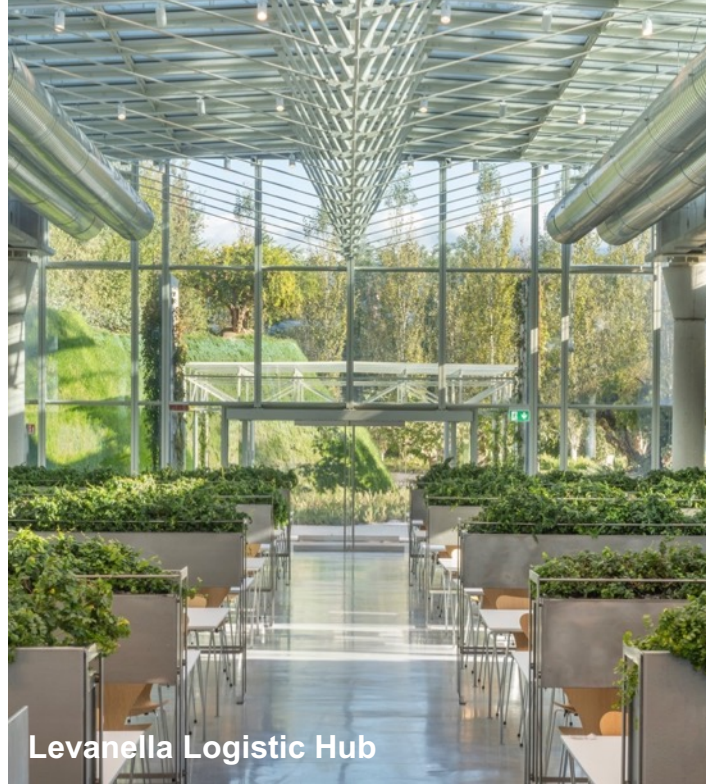
Prada Group «garden factories»



Prada Group «garden factories»



Valvigna



Levarella Logistic Hub

“ The Prada Group garden factories, have been developed following two main themes, which are deeply interconnected: the well-being of the workers and the relationship between interiors and the surrounding landscape.”

GUIDO CANALI
Architect

Group Retail Network

NUMBER OF STORES BY GEOGRAPHICAL AREA

	Owned	Franchises
Asia Pacific	318	20
Europe	245	-
Americas	145	-
Japan	107	-
Middle East	28	2
Total	843	22

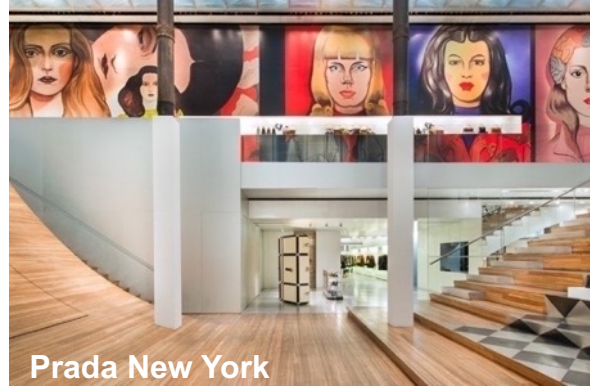
NUMBER OF STORES BY BRAND

	Owned	Franchises
Prada	423	16
Versace (*)	220	-
Miu Miu	162	6
Church's	27	-
Car Shoe	2	-
Marchesi 1824 and other Food and Beverage	9	-
Total	843	22

(*) consolidated from December 2, 2025

Epicenters

Over the years the Prada Group developed innovative retail solutions to reinvent client experience. From 2000s the **Prada** epicenters of **New York**, **Los Angeles** and **Tokyo** – followed by **Miu Miu** epicenter in Aoyama – were conceived. These are spaces where conversations on contemporary culture take place, as well as where brands foster dialogue opportunities with local communities.



Section 2

HISTORY

A Journey through Our History

A Journey through our History

1919

Prada obtained the title of Official Supplier to the Italian Royal Family; since then, Prada has displayed the House of Savoy coat of arms and knotted rope design in its trademark logo.



1913

Opening of the first Prada store in Galleria Vittorio Emanuele II, Milan.



1975

Mario Prada's granddaughter, Miuccia Prada, began her collaboration with the entrepreneur Patrizio Bertelli, founder of his own leather goods company.



1977

Patrizio Bertelli founded IPI S.p.A. to concentrate the production resources in the leather goods industry, obtaining a license from Miuccia Prada for the exclusive production and distribution of Prada brand leather goods. Later the two family businesses merged into a single Group.

1978

Gianni Versace founds his brand with a fashion show at the Palazzo della Permanente in Milan, Italy. In 1998, Donatella Versace is appointed Creative Director of the Brand and presents her first runway following the passing of the late designer.



1979

In response to demand, The Prada leather goods range was expanded to include the first women's footwear collection.



1983

Prada opened a second store in Milan dominated by a special shade of light green, which became known as 'Prada green'. Green stores followed in New York, Madrid, London, Paris and Tokyo.



1988

Prada's first women's clothing collection was launched in Milan.



1993

Prada made its debut in menswear and established a new women's brand, Miu Miu, characterized by a strong, provocative identity. Miuccia Prada and Patrizio Bertelli founded 'Fondazione Prada'.

1997

The Prada Challenge sailing team was founded to compete for the 2000 America's Cup, and Prada launched its Linea Rossa activewear collection.



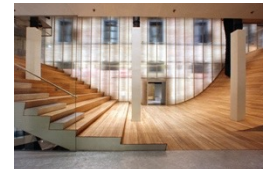
1999

Prada Group acquired the classic English footwear brand Church's, founded in 1873, and a symbol of British handcraft tradition and sophisticated elegance.



2001

The first Prada Epicenter store, designed by Rem Koolhaas, was opened in New York, followed by others in Aoyama, Tokyo and on Rodeo Drive, Beverly Hills. Prada acquired Car Shoe, the classic Italian footwear brand, founded in 1963.



2003

Prada entered into a licensing agreement with Luxottica, the world's leading eyewear company, which produces and distributes Prada and Miu Miu Eyewear.



2006

Miu Miu moved its fashion show venue to Paris, to reflect its free-spirited aesthetic



2007

The launch of the Prada phone by LG, the world's first touchscreen mobile phone. The LG/Prada partnership achieved further success with new models in 2008 and 2011.

2011

Prada S.p.A. was successfully listed on the Hong Kong Stock Exchange.

2015

Prada Group introduced the first Miu Miu fragrance in partnership with multinational beauty company Coty and opened its second Marchesi 1824 location in Milan, having acquired the historic Milanese patisserie the year before.



2017

Prada S.p.A. was admitted to the Cooperative Compliance regime with the Italian tax authorities, introduced with Italian Law Decree 128/2015.

2018

Prada officially unveiled its factory in Valvigna, designed by Guido Canali, architect of the Group's pioneering 'garden factories' and extended its fashion season to present pre-collections in Paris and in New York.



2019

Prada Group announced the adoption of a fur free policy for all its brands, joined The Fashion Pact, and set up its Diversity & Inclusion Advisory Council, as well as launching the first collection made of recycled nylon, Prada Re-Nylon.



2020

Raf Simons joined Miuccia Prada as co-creative director of the Prada design office and the Italian Custom Agency recognized Prada S.p.A. as a Full Authorized Economic Operator ("AEO full").



2021

Prada's Luna Rossa sailing team won the Prada Cup Challenger Selection Series for the second time. The Group founded the Aura Blockchain Consortium with LVMH and Cartier.

2022

Andrea Guerra was announced as the new Group CEO. A new Group-wide Code of Ethics and Human Rights Policy was implemented and Prada launched Eternal Gold, the first jewellery collection made of 100% recycled gold.



2023

Following on from its innovative single-dose skincare in 2000, in 2023 Prada reaffirms its presence in the beauty sector with a new line of make-up and skincare. Prada Caffè pop-ups open in London and Shanghai.

2024

Following the announcement of a strategic partnership with Axiom Space, in 2024 Prada presented the new NASA lunar spacesuits for the Artemis III mission.



2025

In December 2025, Prada S.p.A. announced the successful completion of the acquisition of Versace from Capri Holdings.

Section 3

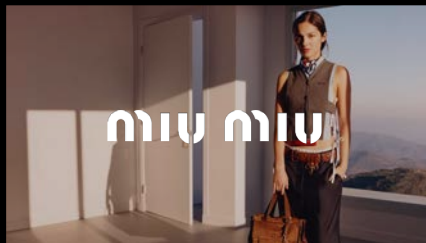
BRANDS

The Seven Brands
Licences

The Seven Brands



Since 1913, Prada has been synonymous with cutting-edge style. Its intellectual universe combines concept, structure and image through codes that go beyond trends. Its fashion transcends products, translating conceptuality into a universe that has become a benchmark to those who dare to challenge conventions. With its collections, today Prada embodies and spreads the vision and intellectual curiosity of co-creative directors Miuccia Prada and Raf Simons.



Miu Miu was born in 1993 from the independent and unconventional spirit of Miuccia Prada. The brand is the most unrestrained portrayal of the designer's creativity. The designer's distinctive interpretation and decoding of the world today is its driving force. A universe of exploration and innovation, the ever-evolving nature of Miu Miu reflects the radical and impulsive character of the woman behind it. Miu Miu is immediate, instinctive and irreverent. With a light but always sophisticated touch, the brand leads fashion, representing the courage to take risks, a razor-sharp instinct to respond to shifts in contemporary fashion and culture.



Church's handcrafted shoes represent timeless elegance and artisanal quality. With a history dating back to 1617, Church's combines the finest leather and superb craftsmanship with impeccable English style, redefining contemporary luxury by centuries-old tradition.



Since 1963, Car Shoe has been known for its iconic loafers with rubber studs and deconstructed soles. Stemming from a passion for race cars and fine handmade shoes, this timeless accessory has become part of the common imagery of travel and motors.

The Seven Brands



Founded by Gianni Versace in 1978, Versace is built on the principle of freedom — empowering fearless self-expression through every touchpoint, from fashion, interiors, fragrance, hospitality and more. Its fierce spirit of independence and progressivism fuels its relationships with the world's most influential figures, positioning Versace at the heart of pop culture. The brand represents Italian style, deeply rooted in Mediterranean culture, expressed in every aspect of daily life.



Pasticceria Marchesi, a Milanese icon since 1824, is renowned for its elegant ambience, its impeccable service and exceptional patisserie. Locations include the historic Via Santa Maria alla Porta, Via Monte Napoleone, Galleria Vittorio Emanuele II in Milan, and a store in London's Mayfair.



Luna Rossa is the Italian sailing team that took part in the 37th edition of the America's Cup, representing the Circolo della Vela Sicilia for a third consecutive time. More than a sporting competition, the challenge is the highest expression of professional sailing and technological innovation. Over the years, the project has won the hearts of Italians and sailing enthusiasts around the world.

Licenses



BEAUTY

In 2003 Prada started the production and marketing of perfumes. In 2021, the brand signed a long-term license agreement with L'Oréal Group for the creation, development and distribution of luxury beauty products.

Following on from its innovative single-dose skincare in 2000, in 2023 Prada reaffirms its presence in the beauty sector with a new line of make-up and skincare.



EYEWEAR

The Prada Group introduced the concept of eyewear as a fashion accessory in 2000, including it in its brands' collections beginning with Prada and Miu Miu sunglasses.

In 2003 the Group enters into a licensing agreement with Luxottica and start to produce also actual optical styles.

Section 4

ESG

Sustainability Strategy

Pillars

For PLANET

For PEOPLE

For CULTURE

Sustainability Strategy

Prada Group's sustainability strategy is the blueprint of a long process of growth and enhancement for the planet, people and culture and it is designed to further build up and reinforce this commitment with ambitious targets.

Highlights 2025

Launch of the Water Stewardship Program

25th Anniversary of the Prada Group Academy

Expansion of the key raw materials conversion plan toward lower-impact solutions

Prada S.p.A. obtained the Gender Equality Certification (UNI/PdR 125:2022)



Our journey is built on continuity. Over the years, we have made clear commitments to climate action, responsible sourcing, people development and community engagement through education. These commitments remain firm and continue to guide our actions today. At the same time, we recognize that to remain relevant we must evolve. As industry advances and expectations change, we are introducing new projects and refining our focus, both for the sector and for our specific business model.

LORENZO BERTELLI
Prada Group Head of
Corporate Social Responsibility



Pillars



We commit to shaping our operations to reduce our footprint

Mitigate our impact on climate change

Preserve the ecosystems

Embrace circular thinking



We commit to an inclusive, creative and fair workplace

Champion diversity and promote inclusion

Foster creativity and know-how preservation

Ensure wellbeing and fair workplace



We commit to sharing our values and to build a sustainable society

Contribute to cultural debate

Further sustainability literacy

Inspire scientific evolution

Pillars

For

PLANET

We commit to shaping our operations
to reduce our footprint

Mitigate our impact on climate change

Preserve the ecosystems

Embrace circular thinking

Prada Group Planet Highlights 2025

A-

Score in CDP Climate Change

97%

Renewable electricity purchased globally

- 64%

Natural gas consumption vs. 2019

24

Owned photovoltaic plants

Pillars

For

PEOPLE

**We commit to an inclusive,
creative and fair workplace**

Champion diversity and promote inclusion

Foster creativity and know-how preservation

Ensure wellbeing and fair workplace

Prada Group People Highlights 2025

The Prada Group is represented all over the world by a mixed universe of cultures, skills and nationalities.

All activities are geared towards the interaction of the cultural and experiential knowledge of new talents with their own identity values.

1

Gender Equality Certification
in Italy (UNI/PdR 125:2022)

45%

Women in top and senior management*

91%

Permanent contracts

~80

Young people aged 18 to 30 trained within
the Prada Group Academy

**Top management positions include those reporting directly to the Group CEO at Headquarters, as well as Presidents and/or General Managers/Corporate Officers of the Regions. The Senior management category refers mainly to directors positions.*

Diversity, Equity & Inclusion

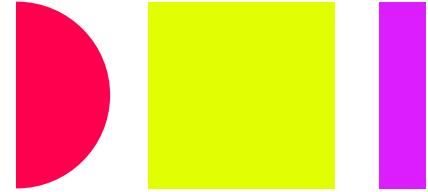
Diversity, an essential element of social sustainability, is a fundamental value for Prada Group. The **appreciation of everyone's unique qualities** is our foundation for creating an **inclusive work environment** that allows people to reach their full potential.

Today, in an increasingly integrated and globalised society, one of our primary objectives is to **understand and support everyone** at Prada Group as they work to achieve their goals and aspirations.

In February 2019, the Prada Group established its DE&I Advisory Council, a group of leading minds in art, fashion, cultural institutions, academia, and activism.

In 2020 and 2021, the Prada Group established a Diversity, Equity and Inclusion team for Prada North America, responsible for developing policies, strategies, and programs to help ensure that diverse perspectives and experiences are represented at all levels at Prada.

PRADA Group



DIVERSITY, EQUITY & INCLUSION

Pillars

For **CULTURE**

**We commit to sharing our values
and to build a sustainable society**

Contribute to cultural debate

Further sustainability literacy

Inspire scientific evolution

Prada Group Culture Highlights 2025

14

Exhibitions and cultural projects realized by Fondazione Prada

3

Fellowships assigned with Fondazione Gianni Bonadonna

+12,500

Visitors engaged by SEA BEYOND at Prada Rong Zhai event in Shanghai

3

Open events on urban greenery within the Forestami Academy project



SEA BEYOND

SEA BEYOND is a project by **Prada Group** conducted in partnership with the **Intergovernmental Oceanographic Commission of UNESCO** (UNESCO-IOC) since 2019 to raise awareness of sustainability and ocean preservation, contributing to the progress of ocean education on a global scale through a series of training initiatives for younger generations. Since its debut, the **educational program** has shared the principles of ocean literacy with more than 35,000 students around the world. Moreover, the “Kindergarten of the Lagoon” project – outdoor education activities for preschool children in Venice – was launched in 2023 to create links between kids and the lagoon ecosystem. While the main focus remains education, SEA BEYOND has recently extended its scope to new areas of focus: support for **scientific research, community engagement activities and policy advocacy** dedicated to the ocean. The commitment was further reinforced in 2025 with the launch of the SEA BEYOND – Multi-Partner Trust Fund for Connecting People and Ocean, designed to mobilize financial resources from a broad coalition of partners to help restore the relationship between humanity and the ocean.

As of July 2023, 1% of the proceeds from the Prada Re-Nylon for SEA BEYOND Collection benefit SEA BEYOND. The list of products in this Collection is available at www.prada.com.

Through SEA BEYOND, Prada Group has also trained its more than 14,000 employees worldwide on ocean literacy principles.

Section 5

Fondazione Prada



Fondazione Prada

Created in 1993 by Miuccia Prada and Patrizio Bertelli, Fondazione Prada was born with the idea that culture is deeply useful and necessary as well as attractive and engaging.

It investigates the present through an experimental and multidisciplinary programme which includes art and photography exhibitions, film projects, conferences and scientific activities, musical and performance initiatives.

Fondazione Prada is active in its **Milan headquarters** in the South of Milan, in the **Osservatorio outpost at Galleria Vittorio Emanuele II** in the Milan city centre, and at the historical building of **Ca' Corner della Regina in Venice**. It also regularly realizes exhibition projects in two external venues, **Prada Aoyama in Tokyo** and **Prada Rong Zhai in Shanghai**.

PRADA Group

pradagroup.com